

Have you heard?
notes & notices
at Tennessee Tech University



VOLUME 11 | NO. 2 | NOVEMBER 2005

www.bryansymphony.org

NOTES FROM THE CONDUCTOR

I took some time earlier this fall to speak with our piano soloist for the upcoming concert, Christopher Harding. Christopher lives in Ann Arbor and teaches at the very fine School of Music at the University of Michigan.

DA: Christopher, I first came to know you through your wife, who is a wonderful oboe player. I know that you were born in Germany, but you are American, is that right?

CH: I was actually born in Munich, the baby of American parents. My father was serving in the military. Yuki and I met at the Eastman School of Music. She then went to Northwestern for a master's degree, and I went to Indiana University for my master's degree and Artist Diploma. We married after she finished up at Northwestern and she moved to Bloomington.

DA: So between now and when I saw you last, fill me in.

CH: After finishing my Artist's Diploma at IU, I was appointed as a visiting lecturer; then I taught at Brevard for 5 years.

DA: Christopher, we have a beautiful new Steinway piano here. How do you adjust to playing different instruments all of the time?

CH: That's the story of your life as a pianist! I learned a great thing from a vocal conductor that you know, Jan Harrington. You don't let your technique, or your instrument, determine your musicality. That's why different pianists can sound so different on the same piano. As an extreme example, I was once at a competition where a particular pianist actually made the pianos sound out of tune. Then someone else would get up and play and the piano would be in tune again!

DA: Wow, that's an interesting observation.

CH: A Steinway is actually a very delicate instrument, with about as many moving parts as a Cadillac, and with a lot of personality. A new piano like that takes about 5 years to really break in. Much of the character in building its sound actually relies on the piano technician.

DA: I'll relay that to our piano technician, Lee Bledsoe; he'll appreciate your acknowledgement. So you are playing Beethoven's "Emperor" concerto with us. What would you like our audience to know?

CH: Well, it was written during the Napoleonic wars, which accounts for its very martial qualities. Of the five concerti that Beethoven wrote, it is the grandest. The 1st movement is colossal; the 2nd suggests the holy songs of pilgrims. The 3rd is

(continued on page 3)

November 13 Concert Program

Aaron Copland	Music from <i>Rodeo</i>
David Diamond	<i>Symphony no. 4</i>
Ludwig von Beethoven	<i>Piano Concerto no. 5</i> "Emperor"
	Christopher Harding, piano

3:00 p.m. in Wattenbarger Auditorium
Bryan Fine Arts Building
Tennessee Tech

For tickets and information, call 372-6088.

CONCERT PREVIEW

with Dr. Catherine Godes

at 2:00 p.m.

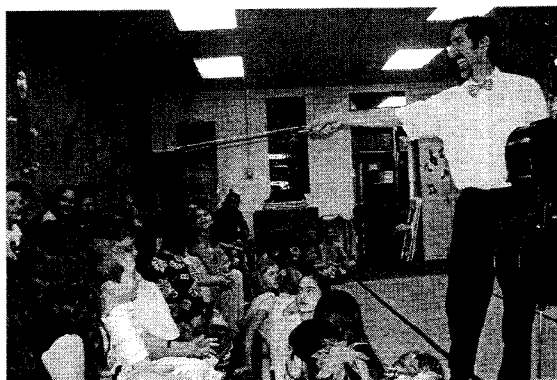
Sunday, November 13, 2005
immediately preceding concert

Room 223
Bryan Fine Arts Building
Free to all ticket holders

From the Executive Director

Education and Outreach: It's not just for kids!

Many of the Bryan Symphony Orchestra's outreach programs are designed to reach that next generation of musicians and concert-goers: the kids of today. Programs that you'll be hearing more about include master classes, an education concert for 4th graders, and the Musicians in Our Schools project. Pictured in this newsletter are examples of some of these activities. We take pride



in these opportunities and spend time, energy, and dollars developing and promoting these and other vital efforts.

Many of our outreach events and projects are planned, however, with the rest of us in mind. These include our preview luncheons, the concert preview lectures of Catherine Godes, Prelude and Coffee on WCTE-TV, Symphony Socials, even this newsletter itself.

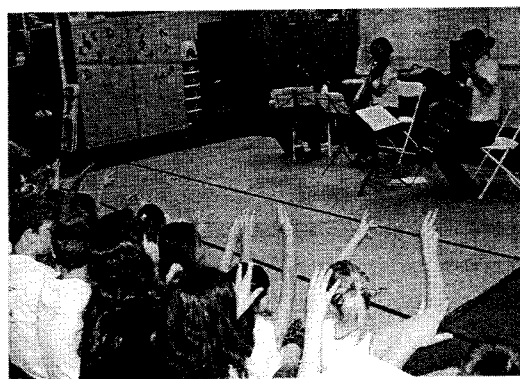
The following is a page excerpted from our October 2 concert program booklet. While it is a fairly impressive list, it is only a partial outlining of the Bryan Symphony Orchestra's educational, outreach, and volunteer activities. Notice that all of these events occurred in September—even before our subscription season began on October 2nd.

The Bryan Symphony Orchestra Association thanks the following persons and organizations for their assistance to the BSO and their work as volunteers in the following activities:

BSO Instrument Petting Zoo at Fall Fun Fest: Clarissa Miller, Barb Good, Putnam County Schools music teachers, WCTE-TV Stations of Imagination



(Photo at left, master class)



Pops concert in Dogwood Park: Sam and Diane Glasgow, sponsors; City of Cookeville Department of Leisure Services; Boy Scout Troop # 156; Josh Rose and the Tennessee Tech Department of Music student workers

Pops concert children's activities: Diane Glasgow, coordinator; Mu Phi Epsilon Professional Music Fraternity, Cookeville High Interact Club

September 30 Symphony Social: Joane and Charles Kibbons, hosts; Social committee chairs Brenda Smith and Grace Anna Sine; members of the Volunteer Council, Brentwood Wine and Spirits, Budweiser of Cookeville

September 30 preview luncheon in Cookeville: Susan Capron, Elaine Hooper, Diane Pulte, Tech Women's Club

September 28 preview luncheon in Crossville: Weir and Jane Horswill

Publicity for the Crossville area: Jane and Weir Horswill

Assistance with mailing of season brochures: Evelyn Breyer, Barbara Briggs, Nina Lunn, Elinor Ross

Our outreach activities involve the efforts of our Board of Directors, its staff, our Music Director, and our volunteers.

We absolutely depend upon the help of volunteers. During the next several weeks, you will be receiving information about how you can participate in our outreach activities. Find your niche. Attend a preview luncheon, help with a master class, try our Symphony Socials. Our concerts are the culmination of many experiences designed to motivate, educate, involve, and enrich us all.

Gail Luna



Greetings from the Volunteer Council

We're so excited about the upcoming season. What a wonderful turnout we had for our September 30th social at the lovely home of Joane & Charles Kibbons! Our socials are an excellent opportunity to network and get to know all the patrons and sponsors on a one-to-one level. As you know, networking is a big part of our Cookeville life. Also, what a treat it is to have our guest artist at our socials.

I want to personally thank my committee for all their hard work: Nina Lunn, Evelyn Breyer, Cheryl Ehlert, Claire McMillan, Angel Beale, JoAnn Wilbourn, Virginia Moore, Ann LeWald; and for those who helped with the September social, Grace Anna Sine, Myrna Estes, Julie Lane, Leon Burns, Jim Smith and Bud Sine. Thanks Joane & Charles for letting us tour your lovely home!

As we stated in our October column, we will not be having a gala or grande social this year; however, look for details to come later about our social honoring our season sponsors!

Happy Holidays to you and Yours!!! We look forward to seeing you at Walton House on Friday, November 11th for our year ending 2005 social. Join us for a fun evening!

Brenda Smith,
Volunteer Council Chairperson
..and BSO Board Member

Notes from the Conductor *continued from page 1*

revealed in a wonderful surprising way.

DA: Like the fourth concerto, it doesn't rely on the typical orchestral introduction.

CH: I know you prefer the fourth concerto, and I love the fourth too, but each one has a wildly different spirit! This was the first concerto Beethoven truly wrote for posterity, and to be performed by someone other than himself. I've played it four times now and each time I grow so much as a musician.

DA: I'm happy to have learned this piece. Each new piece of Beethoven's reveals more about the pieces I already know, or even how he expressed himself in different key areas. I look forward to our performance, and we all look forward to having you here in Cookeville!

Dan Allcott

Symphony Social

Friday, November 11, 2005
7 to 8:30 p.m.
Walton House

Home of Bob & Gloria Bell
TTU President and First Lady
1155 North Dixie Ave.

\$15 per person for BSOA members;
\$30 per person non-members

Reservations: Call 931-372-6088
or e-mail bryansymph@tntech.edu
RSVP by November 8th

Directions: Walton House is the last house on the right on North Dixie before reaching 12th St. across from the Bryan Fine Arts Building

PREVIEW LUNCHEONS

Cookeville

Friday, November 11th
12 Noon

First Presbyterian Church
Fellowship Hall
20 North Dixie Avenue

\$10 per person
RSVP: (931) 372-6088 by
Tuesday, November 8th

Crossville/Fairfield Glade/Pleasant Hill-

Wednesday, November 9th
11:00 a.m.

The Palace Theater Meeting Room
72 S. Main St., Downtown Crossville
\$10 per person

Reservations: Call Jane Horswill
at (931) 484-3054
by Sunday, November 4th

PRELUDE & COFFEE:

Conversations with the Conductor

Friday, November 4th – 4:00 p.m.

Saturday, November 10th – 7:30 p.m.

WCTE – Channel 22

Cable Channel 10

November and December 2005 Concerts/Recitals

Bryan Fine Arts Building - Tennessee Tech

- | | | |
|------------|----------|---|
| Nov. 1 | 7:30p.m. | Cumberland Quintet – Faculty
Woodwind Ensemble |
| Nov. 2-3 | 7:30p.m. | Donald Grantham/Composer
Residency, Center Stage Event |
| Nov. 7 | 8:00p.m. | Colorado String Quartet,
Center Stage Event |
| Nov. 8 | 7:30p.m. | Phil Barham, Faculty
Saxophone Recital |
| Nov. 13 | 3:00p.m. | BRYAN SYMPHONY
ORCHESTRA |
| Nov. 17 | 7:30p.m. | TTU Jazz Bands |
| Nov. 18 | 7:30p.m. | Varsity Night Concert-Golden
Eagle Marching Band |
| Nov. 22 | 7:30p.m. | TTU University Orchestra |
| Dec. 1 & 2 | 7:30p.m. | TTU Choirs |
| Dec. 4 | 7:00p.m. | ABUSUA: West African
Drumming & Dance |
| Dec. 9 | 7:30p.m. | Mastersingers Christmas
Concert |
| Dec. 10 | 3:00p.m. | Mastersingers Christmas
Concert |

For a complete listing of student and faculty recitals
visit www.tntech.edu/musicandart.

For information about Tennessee Tech's Center Stage
concert series, visit www.tntech.edu/centerstage.

NON PROFIT ORG.
U.S. POSTAGE
PAID
PERMIT NO. 101
COOKEVILLE, TN

Bryan Symphony Orchestra
at Tennessee Technological University
Department of Music and Art
TTU Box 5045
Cookeville, TN 38505

ADDRESS SERVICE REQUESTED

**The November 13th concert by
the Bryan Symphony Orchestra
is sponsored by**

Regions Bank

and by

**Friends of the BSO
in honor of Ann Case**